

April 2014

The Heart of America Boxer Club Newsletter

www.hoabc.org

Newsletter for the Heart of America Boxer Club

The next HOABC club meeting – April 19, 2014 at 5:00 p.m. Location Latta Real Estate Services office 954 NW South Outer Rd, Blue Springs, MO 64015 . Pizza will be ordered – feel free to bring the beverages of your choice!

So...you say you **DON'T** have a spiffy Heart of America Boxer Polo shirt?? You don't want to be the **Odd Man** (or woman) out at our next function!?! Well.. Get with Mark Ewing!



2013-2014 Club Members and their New Title Holders

(BN) May -13

GCH Emerson Breho Soul Patrol of Windwood **BN** and **CD** "Reuben" (CD) October -13 Jim and Karen Emerson

Remember- April 1 is the cut off for plaques – be sure to get information to Amber Gates

farmoreboxers@yahoo.com if your dog is missing or information is inaccurate.

February/March Member Brags

•Encore's FarMore Untouchable "Dega" 4pt Major from the BBE class in Fort Worth, TX March 23, 2014

IF you would like to be included in the newsletter brags...please send them to farmoreboxers@yahoo.com by the 20th of each month!

MARK YOUR CALENDARS

Kennel Club of Yorkville, Illinois	De Kalb	IL	Mr. Terry W Temple	5-Apr-14
Kennel Club of Yorkville, Illinois	De Kalb	IL	Mrs. Edna K.(Katie) Gammill	6-Apr-14
Midwest Boxer Club	New Lenox	IL	Mrs. Roberta (Bert) Rettick	10-Apr-14
Midwest Boxer Club	New Lenox	IL	Mr. Tim Hutchings	11-Apr-14
Terry-All Kennel Club, Inc.	Brighton	CO	Ms. Lin Jensen	12-Apr-14
Terry-All Kennel Club, Inc.	Brighton	CO	Dr. Roger S Pritchard	13-Apr-14
Northeast Oklahoma Kennel Club	Grove	OK	<i>Event Not Approved</i>	12-Apr-14
Northeast Oklahoma Kennel Club	Grove	OK	<i>Event Not Approved</i>	13-Apr-14
Grand Island Kennel Club	Grand Island	NE	Mrs. Patricia V Trotter	19-Apr-14
Grand Island Kennel Club	Grand Island	NE	Mr. Edd E Bivin	20-Apr-14
Sandemac Kennel Club	Decatur	IL	<i>Event Not Approved</i>	25-Apr-14
Mattoon Kennel Club, Inc.	Decatur	IL	Mr. Ralph M Lemcke	27-Apr-14
Heart of Iowa Kennel Club	Marshalltown	IA	To Be Assigned	26-Apr-14
Heart of Iowa Kennel Club	Marshalltown	IA	To Be Assigned	27-Apr-14
Seward County Kennel Club	Seward	NE	Christopher Neilson	26-Apr-14
Seward County Kennel Club	Seward	NE	Dr. Robert D Smith	27-Apr-14
Rolla Missouri Kennel Club	Gray Summit	MO	Mrs. Patricia V Trotter	2-May-14
Spirit of the Heartland Kennel Club	Gray Summit	MO	<i>Event Not Approved</i>	3-May-14
Jefferson County Kennel Club of Missouri	Gray Summit	MO	Arley D Hussin	4-May-14

ABC is fast approaching!!!

Event Dates:

Saturday, May 3, 2014 - Friday, May 9, 2014

Closing Dates:

Wednesday, April 16, 2014

Event Location:

Wyndham West
2544 Executive Drive
Indianapolis, IN 46241-5013

Website: <http://www.wyndham.com>

Telephone Number:

Toll Free: 877-361-4511
In Indianapolis: 317-248-2481

Judges:

Futurity Judge - Tami Mishler
Specialty Judges - Butch Engel
& Pat Mullen



Helpful Links

Kansas all breed clubs

<http://sunflowerkc.wordpress.com/>
<http://www.heartofamericakc.org/>
www.wichitakennelclub.com
www.gardencityKSkennelclub.com
www.hutchinsonkennelclub.org/
www.lijk.com/
www.salinakennelclub.org/
www.TopekaKC.org

Kansas Obedience Clubs

www.wichitadogtrainingclub.com

Missouri all breed clubs

www.JCKC.org
<http://www.stjosephkennelclub.com/>
www.missourirhinelandkc.com
www.heartlandkc.org
[iopindogs.com](http://www.iopindogs.com)

Missouri Obedience Clubs

kansascitydogtraining.com/
www.gsltc.org
www.mcotc.org
www.showmek9.com

Important Links- health/clinics

BLUE PEARL

<http://kansas.bluepearlvet.com/>

www.offa.org

<http://www.merckmanuals.com/vet/index.html>
<http://www.cavalierhealth.org/Cardiologists.htm>

Overland Park

913.642.9563
11950 West 110th St
Overland Park KS 66210

Kansas City North

816.759.5016
139 NE 91st Street
Kansas City, MO 64155

NORMA SMITH HANDLING SEMINARS

Now is the Time to Learn to Show Your Dog Like a Professional

2014 SEMINAR SCHEDULE

Fox River Valley Kennel Club
Happy Tails Ranch: Island Lake, Illinois
January 11-12, 2014
Contact: Norma Smith
Email: norma@normasmithhandlingseminars.com

Northstar Working Group Association, Minnesota
Tails Up Dog Training
May 3-4, 2014
Contact: Diane Levin Email: SerendipityDanes@aol.com



<http://www.normasmithhandlingseminars.com/>

CLUB HOLTER

The club has an analog Holter that is available for use by club members.

1. No rental fee
2. Member needs to purchase the number of tape kits needed
3. Rental time is 10 days- adequate to test 5 dogs
4. Shipping to and from the member is the members' responsibilities.
5. Member is responsible for the condition of the Holter and accompanying vest.
6. Members must sign the usage agreement prior to use.
7. Contact Sabrina @ sabrina@lattahomes.com for availability

Officers & Directors 2013-2014

President: Janet Ewing (2014)

Vice President: Thomas Latta (2015)

Treasurer: Sabrina Jay (2014)

Secretary: Amber Gates

Board Member: Karen Emerson (2015)

Board Member: Joyce Peckham (2014)

Board Member: Mark Ewing (2015)

Board Member: Jeanine Millard (2015)

Committee Assignments for 2013-2014

Show Chairperson: Peyton Richardson

Photographer: Jeannine Millard

Hospitality: Amber Gates, Daniel Gates, Nicki McFarland and Scott Reiser

Trophies: Karen Emerson and Mark Ewing

Fundraising: Jeannine Millard, Carol Latta and Hailey Feldkamp

Topeka Show Site/Judges Liaison: Tom Latta

Advertising/HOABC ads: Amber Gates

Public Education/Programs: Karen Emerson and Jim Emerson

Nominating: Jeannine Millard

Cards & Flowers: Sabrina Jay

Historians: Karen Emerson and Peyton Richardson

Website/FB: Thomas Latta

Breeder Referral: Carol Latta

Boxer Rescue: Elizabeth Phillips

2014/15 Zone B Director: Karen Emerson

Newsletter: Amber Gates and Tom Dobbs

Legislation: Joyce Peckham

Rescue Corner



WE NEED HELP!

URGENT need for foster homes!!!

Please! Help get the word out! MO/KAN Boxer rescue is in need of qualified Foster homes.

Some BASIC requirements to be considered for a Foster Home.....

- Fencing is not required but is preferred; not having a fence will limit placement options.
- All other pets in the home must be UTD on shots and on HW prevention year-round.
- Contact Elizabeth or Joyce for more information at mokanboxerrescue@earthlink.net

Contact mokanboxerrescue@earthlink.net

Learning Stuff... Oh ya...

Discospondylitis

What is discospondylitis?

Discospondylitis is infection of the intervertebral disc space. It can occur as a result of spread of infection from elsewhere in the body (i.e. urinary tract, blood stream, prostate) or from local infection only in the disc space. It is most commonly caused by a bacterial infection, however fungal discospondylitis can occur. It occurs most frequently in young to middle aged male large-breed dogs such as the German Shepherd and Rottweiler. Dogs who are not neutered and develop infection of the prostate are predisposed to discospondylitis. Discospondylitis also occurs more commonly in animals who are immune-suppressed.

What are the clinical signs of discospondylitis?

The most common clinical signs are back or neck pain, reluctance to walk, and decreased appetite. Some dogs may cry out when getting up or down or be reluctant to run or jump. The location of the pain depends on the location of the infection. Discospondylitis occurs most commonly in the lower back but can occur anywhere along the spine and often occurs in multiple locations. If the infection is severe or goes for a long time without treatment, the bone can become very weak and prone to fracture. In some cases, the infection can also spread to affect the spinal cord. If fracture or spinal cord infection occurs, animals can become paralyzed.

How is discospondylitis diagnosed?

Spinal radiographs often show evidence of infection at the disc space, but MRI and/or CT scan is preferred to better visualize the bone and spinal cord and is often necessary in early cases of discospondylitis where x-rays don't show dramatic change. In cases where it is safe, a needle can be driven into the intervertebral disc space to try to aspirate and culture the infectious organism.

Because the urine and blood may also harbor infection in some dogs with discospondylitis, they are also cultured.

Continued on next page

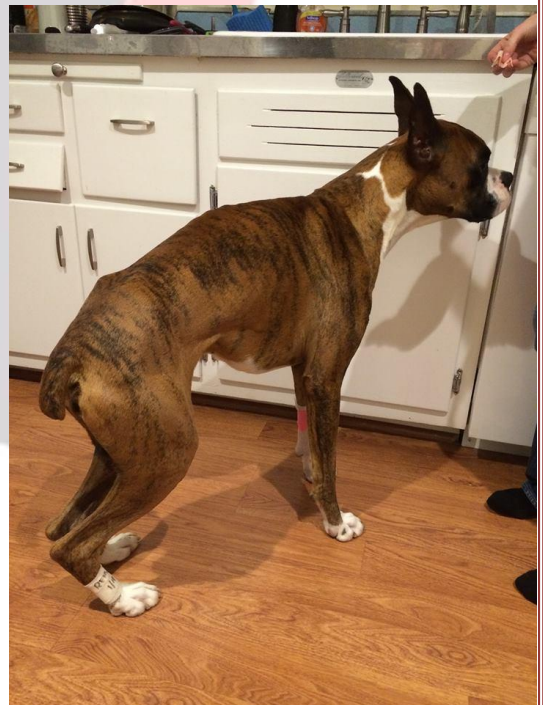
How is discospondylitis treated?

The appropriate antibiotic or antifungal treatment is employed based on the type of infectious organism grown via intervertebral disc, urine, or blood culture. In many cases, the infectious organism is not identified and treatment with an antibiotic that kills the most common type of bacteria (Staphylococcus) is initiated. Treatment for discospondylitis continues for a minimum of 4-6 months, with recheck neurologic exams and radiographs at regular intervals. When an animal has been pain-free and the radiographs show complete resolution of the infection, treatment can be discontinued.

What is the prognosis with discospondylitis?

With early and appropriate treatment, prognosis is good for dogs with bacterial discospondylitis. Fungal discospondylitis carries a much poorer prognosis. Recurrence of infection months to years after treatment can occur in some dogs.

This is a pic of my co-owned bred by- Encore's FarMore Under the Gun "Putu" He was diagnosed mid January with Discospondylitis of the T11-12



Information retrieved from

<http://www.veterinarysurgicalcenters.com/discospondylitis.html>

Helpful Hints



3 Tips for Handling Pulling Toward Another Dog

(Wednesday, March 05, 2014)

[AKC Community Canine](#) is the new advanced level of the [AKC's Canine Good Citizen program](#). Dogs who pass the AKC Community Canine test can earn the "CGCA" title.

When it came time to develop the CGCA test, we wanted a test that was empirically validated. We conducted observations of 100 dogs (and their owners) in community settings. We took data and had inter-observer reliability observations.

We found out that one of the most common problems was ***that dogs pull or lunge on the leash to go to other dogs.***

Here are 3 Tips for Handling Pulling Toward Another Dog:

1. Teach alternative behaviors to pulling and lunging (DRI).

If your dog is pulling to go and see other dogs when out walking, teach the dog some basic obedience skills including sit and heel on leash. (However, the dog does not have to be in a competition heel position; the idea is he will walk close to you when given the cue, "Heel.") DRI, differential reinforcement of incompatible behaviors, means reinforcing a behavior that is incompatible with the one you are trying to eliminate.

2. Implement Systematic Desensitization Procedure.

Systematic desensitization involves using a hierarchy from the least to the most problematic situation. For pulling on a leash, you could start with your dog 50-ft. away from another dog at the park. If the dog can do that without pulling, move to 20-ft., then 10-ft. and so on.

Details on how to do this are in CITIZEN CANINE, the official book of the Canine Good Citizen program. Go [here](#) to order.

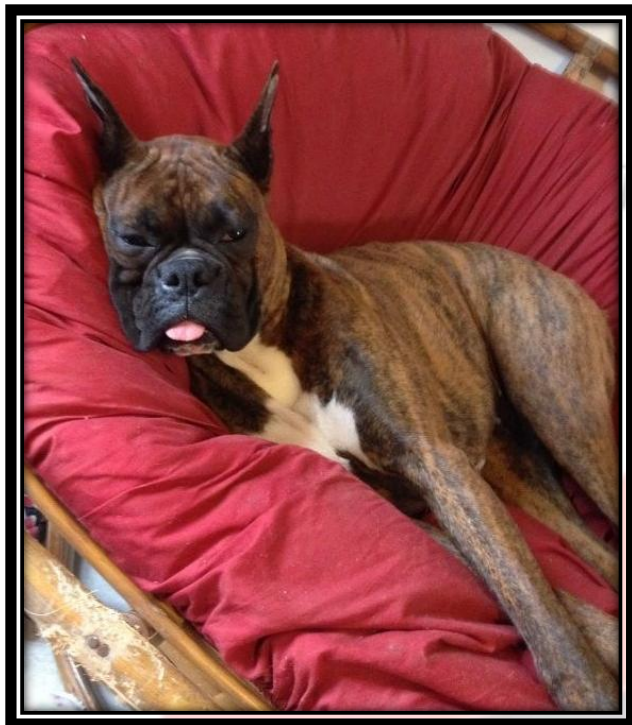
3. Only move toward the other dog when your dog is behaving.

This is a different technique than systematic desensitization. If your dog pulls toward the other dog, turn around and go in the opposite direction, away from the other dog. When your dog is calm, turn and approach the other dog again. You may have to do this several times.

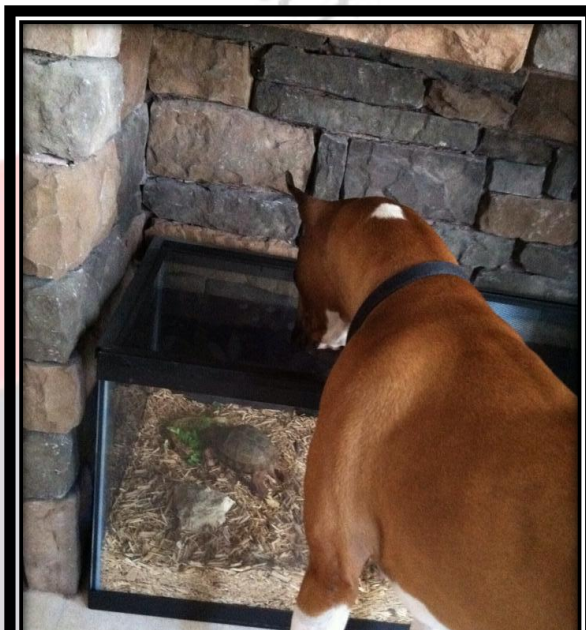
For more information on AKC Community Canine, go to:

http://www.akc.org/dogowner/training/akc_community_canine/links.cfm

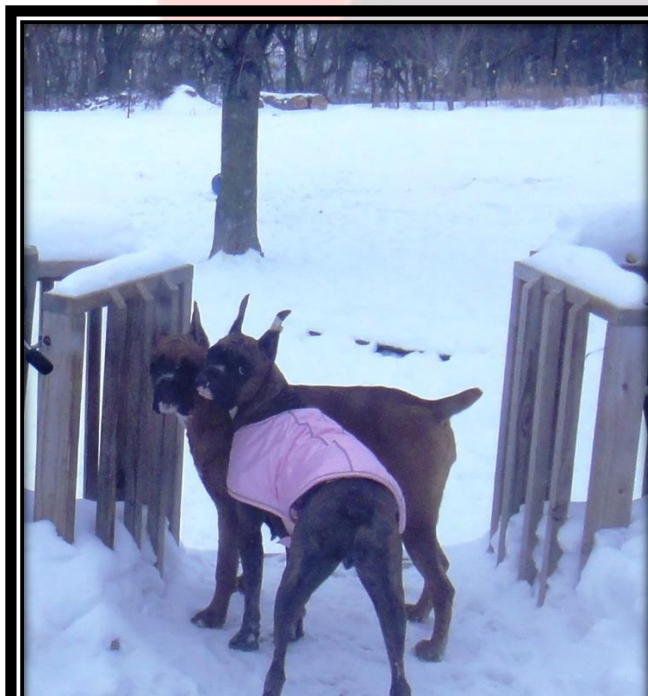
Fun Stuff!



Kendall...sleeping... and dreaming of more “distressing” of wood options she may have! ☺

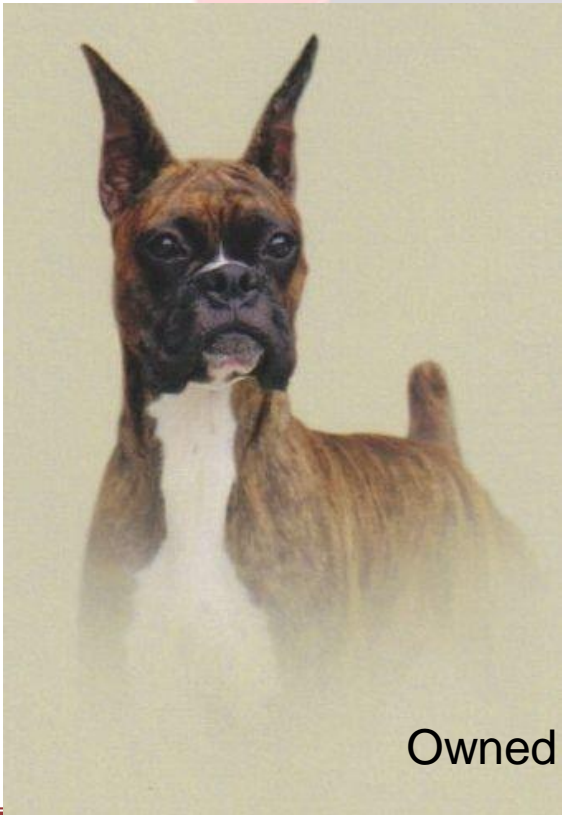
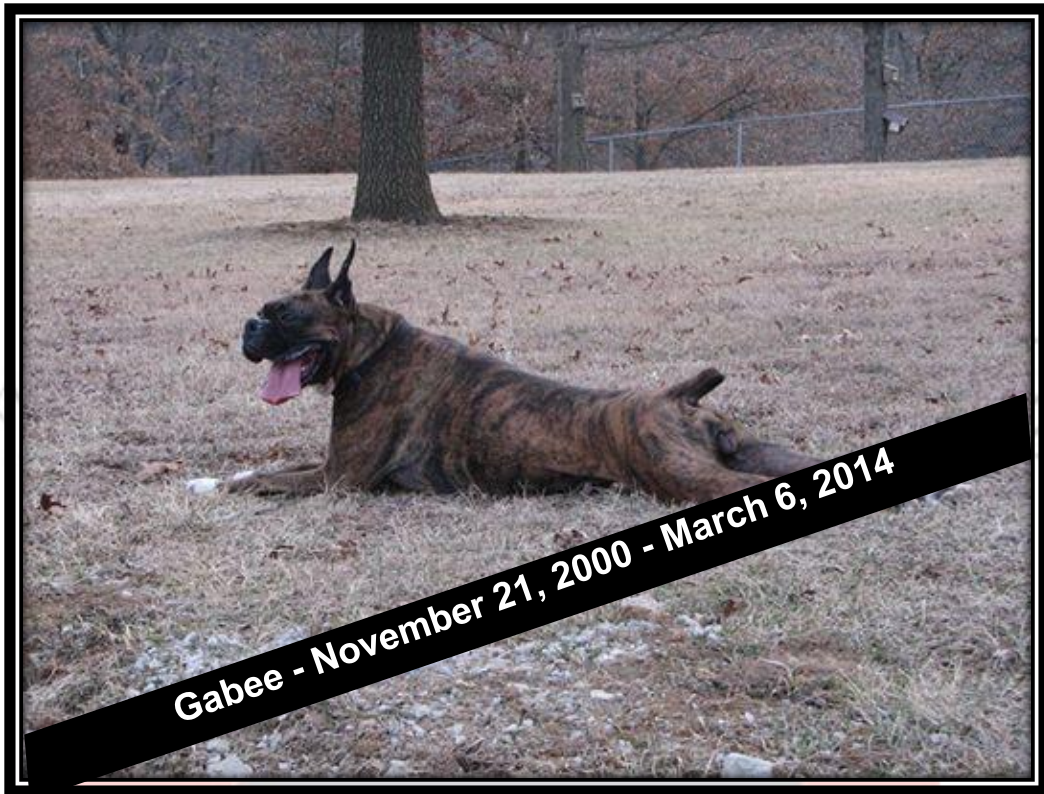


Bristol- -checking out her new roommate- a turtle (one eye and 3 good working legs)



*Rev and Delilah (in the coat) ..
“what...we weren’t planning
anything...”*

In Memory



CH Keepsake's JeSaJay Nite
Journey
"Gabee"

Owned and Loved by Jeff and Sabrina Jay