

February 2016

# The Heart of America Boxer Club Newsletter

[www.hoabc.org](http://www.hoabc.org)

Newsletter for the Heart of America Boxer Club

**The next HOABC club meeting- February 6, 2016 -Rubidoux Room,**  
meeting should start promptly at 11. Order lunch and have the meeting.  
Radisson (was Holiday Inn) St Joseph, Missouri

So...you say you **DON'T** have a spiffy Heart of America Boxer Polo shirt?? You don't want to be the **Odd Man** (or woman) out at our next function!?! Well.. Get with Mark Ewing!



## 2015-2016 Club Members and their New Title Holders

Plaque	Full Name	Plate	Call name	Date of Title	Member/Owner
CH	Olympic W' Harmony's Distance Traveled		"Miles"	April 2015	Nicki McFarland
CH	JeSaJay's Bubbling Brew at Shadow River	GCH	"Millie"	July 2014	Sabrina Jay
CH	Envision Yakety Yak Don't Talk Back		"Sophia"	Sept 2015	Julie Higgins
CH	Breho Emerson Voodoo Magic		"ViVee"	July 2015	Jim and Karen Emerson
GCH	Emerson Breho Soul Patrol of Windwood CD BN	RN	"Reuben"	May 2015	Jim and Karen Emerson
CH	Envision Who's Cheap Talkin Now		"Rick"	July 2015	Julie Higgins
CH	Homeplace Absolutely Mystical Maiden	GCH	"Ginger"	October/November 2015	Scott Reiser
CH	Encore's FarMore Under Your Spell	GCH	"Vegas"	October 2015	Amber and Daniel Gates
CH	Emerson Breho Magic Man		"Manny"	November 2015	Jim and Karen Emerson

[Remember- April 1 is the cut off for ALL plaques – be sure to get information to Amber Gates](#)

**DUPLICATE plaques can be ordered!**

## Homemade Flea Prevention Dog Treats {2 Ingredients & Grain Free}

### Ingredients

- 1 & 1/8\*cups organic coconut oil for pets melted
- 1/2cup Brewers Yeasts lightly rounded
- 2 small paw print silicone pans



### Instructions

- 1.Combine melted coconut oil and brewers yeast together in your blender. Blend for roughly 10 seconds until smooth.
- 2.Transfer blended mixture into a plastic condiment bottle (trim tip to 1/4 inch opening) and use to fill 2 - small paw print silicone pans.
- 3.Chill in the refrigerator or freezer until set & solid.
- 4.Remove from the pan and store in refrigerator or freezer for up to 6 months.

### Recipe Notes

\*1/8 cup = 2 tablespoons

Give up to 1 small paw print Flea Prevention Dog Treat per 10 pounds of body weight daily.

For dogs under 10 pounds, give 1 treat every other day.

Retrieved from [http://www.healthstartsinthekitchen.com/recipe/homemade-flea-prevention-dog-treats-2-ingredient-grain-free/?utm\\_campaign=shareaholic&utm\\_medium=facebook&utm\\_source=socialnetwork](http://www.healthstartsinthekitchen.com/recipe/homemade-flea-prevention-dog-treats-2-ingredient-grain-free/?utm_campaign=shareaholic&utm_medium=facebook&utm_source=socialnetwork)

# MARK YOUR CALENDARS

Club	City	State	Show Date	Breed Judge	Completed Last Year
St. Joseph Kennel Club, Inc.	St Joseph	MO	6-Feb-16	Ms. Diane R Landstrom	16
St. Joseph Kennel Club, Inc.	St Joseph	MO	7-Feb-16	Dr. Donald A Gill	13
Peak to Peak Working Dog Association of Colorado	Denver	CO	11-Feb-16	Mrs. Judith Voran	10
Plum Creek Kennel Club of Colorado	Denver	CO	12-Feb-16	Mrs. Karen S McFarlane	10
Plum Creek Kennel Club of Colorado	Denver	CO	13-Feb-16	Dr. Steve Keating	10
Colorado Kennel Club	Denver	CO	14-Feb-16	Mr. Dennis Morgan	10
Colorado Kennel Club	Denver	CO	15-Feb-16	Dr. Wanda V Spediacci	5
Guadalupe Valley Dog Fanciers	Austin	TX	13-Feb-16	Event Not Approved	
Guadalupe Valley Dog Fanciers	Austin	TX	14-Feb-16	Event Not Approved	
Big Spring Kennel Club	Midland	TX	19-Feb-16	Mr. Jon R Cole	1
Heart of the Plains Kennel Club	Midland	TX	20-Feb-16	Event Not Approved	
West Texas Kennel Club	Midland	TX	21-Feb-16	Event Not Approved	
Cyclone Country Kennel Club of Ames	Des Moines	IA	20-Feb-16	Mr. Geir Flyckt-Pedersen	46
Cyclone Country Kennel Club of Ames	Des Moines	IA	21-Feb-16	Dr. Eric Liebes	44
Greater St. Louis Boxer Club	Gray Summit	MO	4-Mar-16	Ann Gilbert	40
Greater St. Louis Boxer Club	Gray Summit	MO	4-Mar-16	Dr. Dana Ann Smith Massey	42
Belle-City Kennel Club, Inc.	Gray Summit	MO	5-Mar-16	Mr. William (Bill) P Shelton	39
Belle-City Kennel Club, Inc.	Gray Summit	MO	6-Mar-16	Mrs. Beth G Speich	32
Garden City Kansas Kennel Club	Garden City	KS	4-Mar-16	Mr. Charles L Olvis	
Garden City Kansas Kennel Club	Garden City	KS	5-Mar-16	Ms. Elizabeth Muthard	13
Garden City Kansas Kennel Club	Garden City	KS	6-Mar-16	Dr. Donald A Gill	13
Leavenworth Kennel Club	Kansas City	MO	10-Mar-16	Mrs. Paula Nykiel	
Leavenworth Kennel Club	Kansas City	MO	11-Mar-16	Bonnie P Threlfall	
Heart of America Kennel Club, Inc.	Kansas City	MO	12-Mar-16	Mr. Houston Clark	
Heart of America Kennel Club, Inc.	Kansas City	MO	13-Mar-16	Mrs. Charlotte P Patterson	
San Antonio Kennel Club, Inc.	Kerrville	TX	12-Mar-16	Dana P Cline	13
San Antonio Kennel Club, Inc.	Kerrville	TX	13-Mar-16	Jack H Ireland	12
Dallas Boxer Club	Fort Worth	TX	25-Mar-16	Ann Gilbert	39
Fort Worth Kennel Club	Fort Worth	TX	26-Mar-16	Mrs. Terry L Berrios	36
Fort Worth Kennel Club	Fort Worth	TX	27-Mar-16	Ms. Patricia W Laurans	34
Clinton Iowa Kennel Club	De Witt	IA	26-Mar-16	Pending Panel Processing	24
Clinton Iowa Kennel Club	De Witt	IA	27-Mar-16	Pending Panel Processing	24

AKC Point Schedule for Boxers	1 Point		2 Points		3 Points		4 Points		5 Points	
Effective 05/13/2015	Dog	Bitch	Dog	Bitch	Dog	Bitch	Dog	Bitch	Dog	Bitch
Division 1: CT/ME/MA/NH/RI/VT	2	2	6	9	10	15	13	19	19	27
Division 2: DE/NJ/NY/PA	2	2	7	8	12	14	16	19	24	29
Division 3: DC/MD/NC/TN/VA/WV	2	2	6	6	10	10	14	14	21	21
Division 4: FL/GA/SC	2	2	8	7	13	12	15	16	20	24
Division 5: IN/KY/OH	2	2	6	10	11	18	17	25	22	32
Division 6: IA/KS/MO/NE	2	2	9	12	16	21	20	23	23	27
Division 7: CO/OK/TX	2	2	7	9	11	16	13	19	18	24
Division 8: OR/WA	2	2	7	11	11	18	13	25	18	27
Division 9: AZ/CA	2	2	7	10	11	17	15	23	23	34
Division 10: AK	2	2	3	3	4	4	5	5	6	6
Division 11: HI	2	2	3	3	4	4	5	5	6	6
Division 12: PR	2	2	3	4	4	5	5	6	6	7
Division 13: ID/MT/NV/NM/ND/SD/UT/WY	2	2	5	6	8	11	10	14	15	16
Division 14: AL/AR/LA/MS	2	2	6	9	10	17	11	20	16	24
Division 15: IL/MI/MN/WI	2	2	7	9	12	16	14	20	19	25

## Helpful Links

### Kansas all breed clubs

<http://sunflowerkc.wordpress.com/>  
<http://www.heartofamericakc.org/>  
[www.wichitakennelclub.com](http://www.wichitakennelclub.com)  
[www.gardencityKSkennelclub.com](http://www.gardencityKSkennelclub.com)  
[www.hutchinsonkennelclub.org/](http://www.hutchinsonkennelclub.org/)  
[www.ljkc.com/](http://www.ljkc.com/)  
[www.salinakennelclub.org/](http://www.salinakennelclub.org/)  
[www.TopekaKC.org](http://www.TopekaKC.org)

### Kansas Obedience Clubs

[www.wichitadogtrainingclub.com](http://www.wichitadogtrainingclub.com)

### Missouri all breed clubs

[www.JCKC.org](http://www.JCKC.org)  
<http://www.stjosephkennelclub.com/>  
[www.missourirhinelandkc.com](http://www.missourirhinelandkc.com)  
[www.heartlandkc.org](http://www.heartlandkc.org)  
[jopbindogs.com](http://jopbindogs.com)

### Missouri Obedience Clubs

[kansascitydogtraining.com/](http://kansascitydogtraining.com/)  
[www.gsltc.org](http://www.gsltc.org)  
[www.mcotc.org](http://www.mcotc.org)  
[www.showmek9.com](http://www.showmek9.com)

## Important Links- health/clinics

### BLUE PEARL

<http://kansas.bluepearlvet.com/>

[www.offa.org](http://www.offa.org)

<http://www.merckmanuals.com/vet/index.html>  
<http://www.cavalierhealth.org/Cardiologists.htm>

### Overland Park

913.642.9563  
11950 West 110th St  
Overland Park KS 66210

### Kansas City North

816.759.5016  
139 NE 91st Street  
Kansas City, MO 64155

## Area Barn Hunt Clubs

### **Barn Hunt Association LLC**

<http://www.barnhunt.com>  
3506 Westwind Dr  
Columbia MO 65202

### **Sunflower Kennel Club of Olathe, KS, Inc.**

<http://ksexpo.com>  
Trial Chair: Lori Pierson  
913-485-4027  
[firecreek@everestkc.net](mailto:firecreek@everestkc.net)

### **Columbia Canine Sports Center, LLC**

<http://www.columbiak9sportscenter.com>  
4506 I70 Dr SE  
Columbia MO 65201  
Trial Chair: Kathy Echols  
573-673-9680  
[krechols@aol.com](mailto:krechols@aol.com)

### **Salina Kennel Club, Inc.**

Trial Chair: Don Phillips  
[phil20021@cox.net](mailto:phil20021@cox.net)



## CLUB HOLTER

*The club has an analog Holter that is available for use by club members.*

1. No rental fee
2. Member needs to purchase the number of tape kits needed
3. Rental time is 10 days- adequate to test 5 dogs
4. Shipping to and from the member is the members' responsibilities.
5. Member is responsible for the condition of the Holter and accompanying vest.
6. Members must sign the usage agreement prior to use.
7. Contact Sabrina @ [sabrina@lattahomes.com](mailto:sabrina@lattahomes.com) for availability

## Officers & Directors 2015-2016

President: Karen Emerson (2017)

Vice President: Mark Ewing (2017)

Treasurer: Sabrina Jay (2016)

Secretary: Amber Gates (2016)

Board Member: Janet Ewing (2016)

Board Member: Thomas Latta (2017)

Board Member: Jeanine Millard (2017)

### Committee Assignments for 2015-2016

Show Chairperson: Jeannine

Trophies: Janet (C), Mark and Tom D

Hospitality: Joyce (C), Liz, Scott, Rachel, and Kyle

Facebook Updates: Amber (C) and Peyton

Fundraising: Jeannine (C), Jim, Peyton, Tom L,  
Tom D, and Dan

Performance: Mark (C), Janet, and Rachel

Advertising: Tiffany (C) and Nikki

Annual Meeting: Sabrina (C), Jeff, and Julie

Nominating: Mark

Cards & Flowers: Sabrina (C) and Carol

Historian: Peyton

Website: Tom L

Breeder Referral: Carol

Boxer Rescue: Liz

Membership: Jeannine and Julie

Newsletter: Amber

Public Education: Tiffany (C), Julie, and Joyce

Legislation: Joyce

Door Prize: Carol (C), Hailey



Call 1-855-M6-4Dogs and use code CP542764 to receive your 10% discount – or use their app

## Rescue Corner



**WE NEED HELP!**

### **URGENT need for foster homes!!!**

Please! Help get the word out! MO/KAN Boxer rescue is in need of qualified Foster homes.

Some BASIC requirements to be considered for a Foster Home.....

- Fencing is not required but is preferred; not having a fence will limit placement options.
- All other pets in the home must be UTD on shots and on HW prevention year-round.
- Contact Elizabeth or Joyce for more information at [mokanboxerrescue@earthlink.net](mailto:mokanboxerrescue@earthlink.net)

Contact [mokanboxerrescue@earthlink.net](mailto:mokanboxerrescue@earthlink.net)



# **SSLRC HEALTH CLINIC**

**SATURDAY 12th March 2016 -- 9 am - 5pm.**

**(All BREEDS welcome)**

(Little Red Building east of the RV parking)

\*\*\*\*\*

*It doesn't mention location  
precisely... will be held at Purina  
Farms- Gray Summit, MO - Amber*

**EYE Clinic - \$35.00 Walk In's Welcome.**

**Conducted by Cecil Moore, DVM, MS**

\*\*\*\*\*

**Echo/Colour Doppler Heart Clinic**

**Conducted by**

**Cecilia Marshall, DVM, DACVIM (Cardio Specialist)**

**\$165.00 with Appointment or \$180.00 for walk in**

**Auscultation alone \$55 w/appointment or \$65 for walk in**

**Book early to avoid disappointment.**

**Please contact me for availability. Sharon Hamilton -**

**Acornoak@gotrain.org**

## Learning Something...yep...

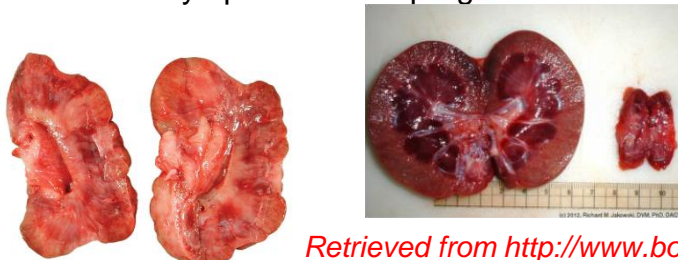
### What is Boxer Juvenile Kidney Disease (JKD)

Kidney failure is common in all of us, including our dogs. Kidney damage and disease can be caused by exposure to noxious agents such as anti-freeze, systemic bacterial infections such as *leptospirosis*, tick borne diseases or even some parasites. The onset of kidney disease typically also occurs with increasing age. In addition these causes there are also several different inherited forms of kidney disease. The problem of inherited (familiar) kidney disease has been recognized in several different breeds of pedigree dogs and according to the knowledge at the time of the identification has been called by a variety of different names ([see Publications](#)).

It has been recognized for at least a decade now that there is an inherited kidney disease in Boxers. There are several published papers from different parts of the world describing both the history, the clinical findings and the histopathology. One paper also shows a familial link between the affected individuals ([see Publication](#)).

In the UK we use the simple **non-specific** name, Juvenile Kidney Disease, **JKD**, as this has been used from the first recognition of the disease in the UK. The term, **Juvenile Renal Dysplasia (JRD)** and even **Renal Dysplasia (RD)** has been used in Sweden and America. In Norway and Sweden it has also been called **Progressive Nephropathy of Juvenile Nephropathy**. To avoid any confusion that may be caused by the differences in the terminology globally, in this website we have chosen to call the inherited form of kidney disease found in Boxers, **Boxer JKD**.

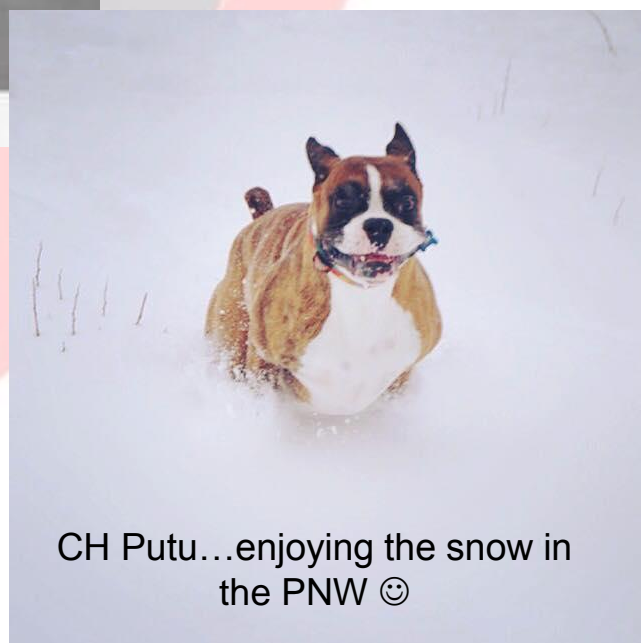
Irrespective of the cause, kidney disease symptoms are unspecific and subtle such that in dogs, owners and the vets may have difficulty recognising the very first stages of the disease. Problems with house training of young puppies have often been claimed retrospectively as the first signs that something was wrong with a puppy, followed by the onset of urine tract infections (UTIs). With Boxer JKD, the abnormal kidney structure that is the cause of the reduced function is irreversible. The kidneys did not develop normally during the gestation period. The kidneys fail to mature into normal kidneys in the first couple of months of life. The disease is usually progressive and can lead to fatal end-stage kidney disease. The age of onset of symptoms and survival times of dogs can vary greatly. This is a reflection of the severity of the kidney abnormality in the individual. Kidney development in the embryo is complicated and is not yet fully understood. At this time, there is no clearly-defined description of the process that causes the onset of symptoms or the progression of inherited kidney disease in any breed

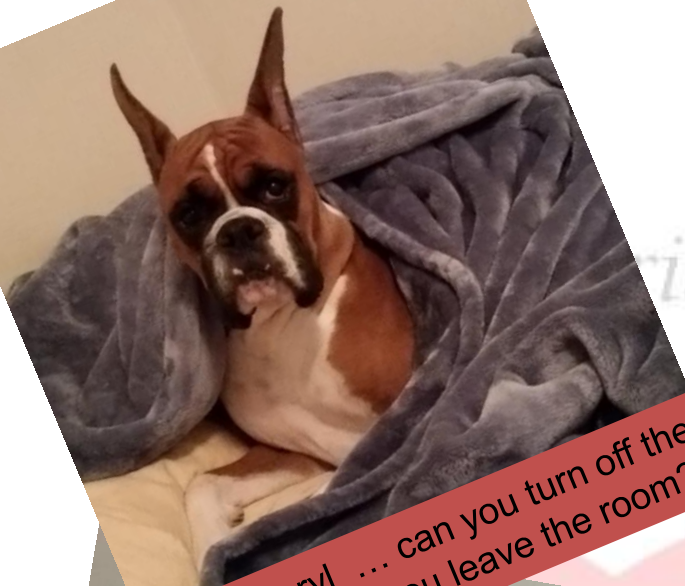


Retrieved from <http://www.boxerjkd.com/what-is-boxer-jkd1.html>



## Fun Stuff!

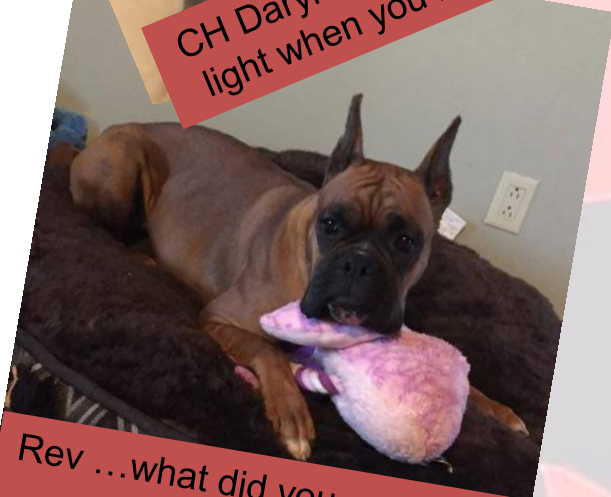




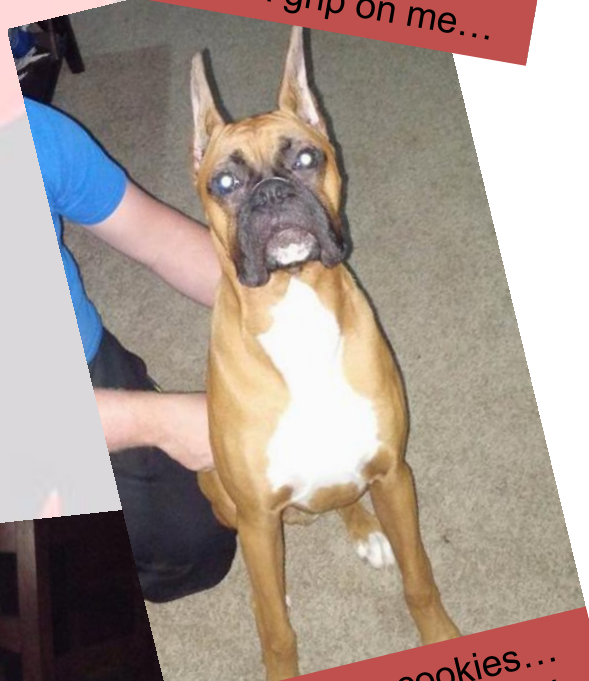
CH Daryl ... can you turn off the light when you leave the room?



Graham... "this fat man has a death grip on me..."



Rev ...what did you say about cookies....



Go get the cookies... Or I will use the doggie force...



Ascan and Ellie... relaxing....