

June 2016

# The Heart of America Boxer Club Newsletter

[www.hoabc.org](http://www.hoabc.org)

Newsletter for the Heart of America Boxer Club

**The next HOABC club meeting- May 25, 2016 at K-Macho 11741**

**Metcalf Ave, Overland Park, Kansas 66210 at 630pm**

**Annual Meeting – June 25, 2016 @11am at Shawnee**

**Mission Park, Shelter 4**



So...you say you **DON'T** have a spiffy Heart of America Boxer Polo shirt?? You don't want to be the **Odd Man** (or woman) out at our next function!?! Well.. Get with Mark Ewing!

## 2016-2017 Club Members and their New Title Holders

| Plaque | Full Name | Plate | Call name | Date of Title | Member/Owner |
|--------|-----------|-------|-----------|---------------|--------------|
| CH     |           |       |           |               |              |

[Remember- April 1 is the cut off for ALL plaques – be sure to get information to Amber Gates](#)

**DUPLICATE plaques can be ordered!**

## Member Brags

*IF you would like to be included in the newsletter brags...please send them to [farmoreboxers@yahoo.com](mailto:farmoreboxers@yahoo.com) by the 20<sup>th</sup> of each month!*



Shiloh, CH GALAROC N EWING'S SHOW OFF NA NAJ, Qed in Open Jumpers with Weaves at the 2016 ABC Agility trial with her Daddy guiding her.



Carmel, CH GALAROC N EWING'S SHOW BIZ NAP, Qed in Novice Preferred Jumpers with Weaves at the 2016 ABC Agility trial with her Mama by her side.



Check out our Facebook page for Updates...



| Club                               | City          | State | Show Date | Breed Judge                  | Entry Last Year |
|------------------------------------|---------------|-------|-----------|------------------------------|-----------------|
| Flatirons Kennel Club              | Longmont      | CO    | 4-Jun-16  | Mr. William C Stebbins       | 7               |
| Flatirons Kennel Club              | Longmont      | CO    | 5-Jun-16  | Ms. Beverly Capstick         | 7               |
| Missouri Rhineland Kennel Club     | Gray Summit   | MO    | 3-Jun-16  | Debra Thornton               | 9               |
| Missouri Rhineland Kennel Club     | Gray Summit   | MO    | 4-Jun-16  | Ms. Mary Anne Brocious       | 7               |
| Mississippi Valley Kennel Club     | Gray Summit   | MO    | 5-Jun-16  | Ms. Marjorie Martorella      | 5               |
| Mississippi Valley Kennel Club     | Gray Summit   | MO    | 6-Jun-16  | Mr. Dennis J Gallant         | 9               |
| Minnesota Boxer Club, Inc.         | Jordan        | MN    | 10-Jun-16 | Ms. Nikki Riggsbee           | 50              |
| Minnesota Boxer Club, Inc.         | Jordan        | MN    | 10-Jun-16 | Ms. Lin Jensen               | 51              |
| Lake Minnetonka Kennel Club        | Jordan        | MN    | 11-Jun-16 | Robert H Slay                | 41              |
| Lake Minnetonka Kennel Club        | Jordan        | MN    | 12-Jun-16 | Mrs. Cathy H Daugherty       | 41              |
| Kennel Club of Texarkana, Inc.     | Texarkana     | AR    | 18-Jun-16 | Col. Joe B Purkhiser         | 8               |
| Kennel Club of Texarkana, Inc.     | Texarkana     | AR    | 19-Jun-16 | Mr. Charles L Olvis          | 6               |
| Fort Dodge Kennel Club             | Fort Dodge    | IA    | 18-Jun-16 | Mr. Thomas Alexander         | 20              |
| Fort Dodge Kennel Club             | Fort Dodge    | IA    | 19-Jun-16 | Sandy Alexander              | 20              |
| Anoka County Minnesota Kennel Club | Cambridge     | MN    | 23-Jun-16 | Dr. John A Reeve-Newson      | 19              |
| Anoka County Minnesota Kennel Club | Cambridge     | MN    | 24-Jun-16 | Ms. Marjorie Martorella      | 18              |
| Cambridge Minnesota Kennel Club    | Cambridge     | MN    | 25-Jun-16 | Mrs. Faye Strauss            | 19              |
| Cambridge Minnesota Kennel Club    | Cambridge     | MN    | 26-Jun-16 | Mrs. Mary Ann Alston         | 16              |
| Waterloo Kennel Club, Inc.         | Waterloo      | IA    | 25-Jun-16 | Mrs. Jacqueline Quiros-Kubat |                 |
| Waterloo Kennel Club, Inc.         | Waterloo      | IA    | 26-Jun-16 | Mr. Steven D Gladstone       |                 |
| Lawton Dog Fanciers Association    | Oklahoma City | OK    | 29-Jun-16 | Mr. Kenneth A Buxton         | 28              |
| Lawton Dog Fanciers Association    | Oklahoma City | OK    | 30-Jun-16 | Mr. David Bolus              | 29              |
| Mid-Del-Tinker Kennel Club, Inc.   | Oklahoma City | OK    | 1-Jul-16  | Ms. Peggy Beisel-McIlwaine   | 29              |
| Oklahoma City Kennel Club, Inc.    | Oklahoma City | OK    | 2-Jul-16  | Mrs. Donna J Buxton          | 31              |
| Oklahoma City Kennel Club, Inc.    | Oklahoma City | OK    | 3-Jul-16  | Mr. Steven D Gladstone       | 33              |

| Point Schedule for Boxers           | 1 Point   | 2 Points  | 3 Points  | 4 Points  | 5 Points  |
|-------------------------------------|-----------|-----------|-----------|-----------|-----------|
| Effective May 11, 2016              | Dog Bitch | Dog Bitch | Dog Bitch | Dog Bitch | Dog Bitch |
| Division 1: CT, ME, MA NH, RI, VT   | 2 2       | 6 7       | 10 11     | 14 20     | 21 30     |
| Division 2: DE, NJ, NY, PA          | 2 2       | 6 8       | 10 14     | 15 18     | 24 24     |
| Division 3: DC, MD, NC, TN, VA, WV  | 2 2       | 6 7       | 10 11     | 12 16     | 15 24     |
| Division 4: FL, GA, SC              | 2 2       | 6 8       | 10 13     | 12 18     | 16 21     |
| Division 5: IN, KY, OH              | 2 2       | 5 9       | 8 14      | 12 20     | 19 31     |
| Division 6: IA, KS, MO, NE          | 2 2       | 7 10      | 11 17     | 14 20     | 19 25     |
| Division 7: CO, OK, TX              | 2 2       | 6 10      | 10 18     | 14 20     | 20 25     |
| Division 8: OR, WA                  | 2 2       | 5 12      | 8 20      | 10 23     | 13 26     |
| Division 9: AZ, CA                  | 2 2       | 6 10      | 10 18     | 13 22     | 19 29     |
| Division 10: AK                     | 2 2       | 3 3       | 4 4       | 5 5       | 6 7       |
| Division 11: HI                     | 2 2       | 3 3       | 4 4       | 5 5       | 6 6       |
| Division 12: Puerto Rico            | 2 2       | 3 3       | 4 4       | 5 5       | 6 6       |
| Division 13: ID, MT, NV, NM, ND, SC | 2 2       | 5 7       | 9 12      | 10 16     | 13 18     |
| Division 14: AL, AR, LA, MS         | 2 2       | 7 9       | 11 16     | 12 18     | 17 23     |
| Division 15: IL, MI, MN, WI         | 2 2       | 6 10      | 10 17     | 12 21     | 16 28     |

## Helpful Links

### Kansas all breed clubs

<http://sunflowerkc.wordpress.com/>  
<http://www.heartofamericakc.org/>  
[www.wichitakennelclub.com](http://www.wichitakennelclub.com)  
[www.gardencityKSkennelclub.com](http://www.gardencityKSkennelclub.com)  
[www.hutchinsonkennelclub.org/](http://www.hutchinsonkennelclub.org/)  
[www.ljkc.com/](http://www.ljkc.com/)  
[www.salinakennelclub.org/](http://www.salinakennelclub.org/)  
[www.TopekaKC.org](http://www.TopekaKC.org)

### Kansas Obedience Clubs

[www.wichitadogtrainingclub.com](http://www.wichitadogtrainingclub.com)

### Missouri all breed clubs

[www.JCKC.org](http://www.JCKC.org)  
<http://www.stjosephkennelclub.com/>  
[www.missourirhinelandkc.com](http://www.missourirhinelandkc.com)  
[www.heartlandkc.org](http://www.heartlandkc.org)  
[jopbindogs.com](http://jopbindogs.com)

### Missouri Obedience Clubs

[kansascitydogtraining.com/](http://kansascitydogtraining.com/)  
[www.gsltc.org](http://www.gsltc.org)  
[www.mcotc.org](http://www.mcotc.org)  
[www.showmek9.com](http://www.showmek9.com)

## AWESOME stuff to do with your dog!



### All Star Dog Sports (BSMO)

<http://www.allstardogsports.com/>  
<https://www.facebook.com/Allstardogsports/?fref=ts>

### Mo-Kan Dock Diving

<https://www.facebook.com/mokandockdogs/?fref=ts>  
<https://www.facebook.com/mokandockdogs>

## Important Links- health/clinics

### BLUE PEARL

<http://kansas.bluepearlvet.com/>

[www.offa.org](http://www.offa.org)

### Overland Park

913.642.9563  
11950 West 110th St  
Overland Park KS 66210

### Kansas City North

816.759.5016  
139 NE 91st Street  
Kansas City, MO 64155

<http://www.merckmanuals.com/vet/index.html>  
<http://www.cavalierhealth.org/Cardiologists.htm>

## CLUB HOLTER

*The club has an analog Holter that is available for use by club members.*

1. No rental fee
2. Member needs to purchase the number of tape kits needed
3. Rental time is 10 days- adequate to test 5 dogs
4. Shipping to and from the member is the members' responsibilities.
5. Member is responsible for the condition of the Holter and accompanying vest.
6. Members must sign the usage agreement prior to use.
7. Contact Sabrina @ [sabrina@lattahomes.com](mailto:sabrina@lattahomes.com) for availability

## Officers & Directors 2015-2016

President: Karen Emerson (2017)

Vice President: Mark Ewing (2017)

Treasurer: Sabrina Jay (2016)

Secretary: Amber Gates (2016)

Board Member: Janet Ewing (2016)

Board Member: Thomas Latta (2017)

Board Member: Jeanine Millard (2017)

### Committee Assignments for 2015-2016

Show Chairperson: Jeannine

Trophies: Janet (C), Mark and Tom D

Hospitality: Joyce (C), Liz, Scott, Rachel, and Kyle

Facebook Updates: Amber (C) and Peyton

Fundraising: Jeannine (C), Jim, Peyton, Tom L,  
Tom D, and Dan

Performance: Mark (C), Janet, and Rachel

Advertising: Tiffany (C) and Nikki

Annual Meeting: Sabrina (C), and Julie

Nominating: Mark

Cards & Flowers: Sabrina (C) and Carol

Historian: Peyton

Website: Tom L

Breeder Referral: Carol

Boxer Rescue: Liz

Membership: Jeannine and Julie

Newsletter: Amber

Public Education: Tiffany (C), Julie, and Joyce

Legislation: Joyce

Door Prize: Carol (C), Hailey



Call 1-855-M6-4Dogs and use code CP542764 to receive your 10% discount – or use their app

## Rescue Corner



**WE NEED HELP!**

### **URGENT need for foster homes!!!**

Please! Help get the word out! MO/KAN Boxer rescue is in need of qualified Foster homes.

Some BASIC requirements to be considered for a Foster Home.....

- Fencing is not required but is preferred; not having a fence will limit placement options.
- All other pets in the home must be UTD on shots and on HW prevention year-round.
- Contact Elizabeth or Joyce for more information at [mokanboxerrescue@earthlink.net](mailto:mokanboxerrescue@earthlink.net)

Contact [mokanboxerrescue@earthlink.net](mailto:mokanboxerrescue@earthlink.net)



SO excited!!! Jennifer and Emily- from the Ozarks Mischief Barn Hunt group- have agreed to come on out to the HOABC annual meeting and conduct an introduction to what Barn Hunt is!

- Bring a Boxer or two- and see how it works and what the excitement is all about.!

We are not conducting official "instinct testing" at this event... but we ARE providing a chance for you to see what the test is all about ask some questions!

*This is FREE- but please donate at least \$5 for each dog that participates. For the time and equipment.*

Barn Hunt is the new and quickly growing dog sport catching fire across the country! Barn Hunt is based on the traditional roles of many breeds in ridding farms, barns, crop storage areas, and homes of destructive vermin. Some breeds were specifically created to fill this role, and for many of those breeds, Barn Hunt provides their first true opportunity for responsible breeders to test proper working traits in their dogs. Barn Hunt is also open to any dog of any breed or mix who wishes to play the game and can fit through an 18" wide by bale-height tall tunnel. Barn Hunt has titles, levels of increasing difficulty, and championships. Barn Hunt is an independent sport, but titles are recognized by both the American Kennel Club (AKC) and United Kennel Club (UKC).

Barn Hunt is committed to creating a safe and fun sport for dogs, that also holds rat care at the highest level of consideration. The rats used in Barn Hunt are often beloved family pets. They jump eagerly into their safe, comfortable aerated tubes and truly enjoy interacting with the dogs.



June 25, 2016 @11am at Shawnee Mission Park, Shawnee, KS  
Shelter 4

## Learning Something...yep...



RILIND: BEFORE

**EXOCRINE  
PANCREATIC  
INSUFFICIENCY  
(EPI):  
POTENTIALLY  
UNDERDIAGNOSED**



RILIND: AFTER

## EXOCRINE PANCREATIC INSUFFICIENCY IN DOGS AND CATS

*We would like to thank Olesia Kennedy of EPI4Dogs Foundation for her assistance with this article, the photos, and tireless dedication to provide comprehensive, up-to-date information on Exocrine Pancreatic Insufficiency. I encourage everyone to visit [EPI4Dogs.com](http://EPI4Dogs.com).*

Don't be intimidated by the title. The basics of Exocrine Pancreatic Insufficiency (EPI) are easy to understand. However, research is rapidly proving that we have barely scratched the surface of this condition. In fact, I believe EPI is underdiagnosed.

### **Biology 101**

Before we get ahead of ourselves, let's have a biology 101 breakdown of EPI. The pancreas serves as a two-in-one organ, meaning that it functions as both an endocrine and exocrine gland.

**Endocrine** – The endocrine system secretes hormones directly into the bloodstream that do not leave the body. Hence, “endo.” The pancreas releases the insulin and glucagon hormones. The thyroid gland – which is one of my fields of emphasis – is a member of the endocrine system.

**Exocrine** – On the flip side, the exocrine system secretes a variety of substances to be eventually disposed of outside of the body. The exocrine system includes the sweat, tears, and salivary glands. Functioning as an exocrine gland, the pancreas produces and then secretes digestive enzymes (juices) into the duodenum, the first section of the small intestine. These digestive enzymes aid in the digestion of proteins, fats and carbohydrates.

**Insufficiency** – “Insufficiency” is the inability or lack of sufficiency, in this case, to synthesize digestive enzymes by the acinar cells of the pancreas. These cells are destroyed or malfunctioning.

## What happens

The acinar cells are “atrophied” – meaning they are wasting away or possibly already destroyed. Thus, these acinar cells cannot manufacture digestive enzymes properly. When the affected digested enzymes enter the duodenum maldigestion and malabsorption will set in, which will lead to another condition called Small Intestinal Dysbiosis (SID). (SID is also formally known as Small Intestinal Bacterial Overgrowth [SIBO].) SID is due to excessive bacterial overgrowth in the small intestine. These bacteria feast on fermenting food that is not digesting. Then, the amount of bacteria continues to increase and eventually lines the tissue of the small intestine, which further impairs the absorption of vital nutrients and also depletes the body’s reserve of vitamin B12.

Symptoms of EPI vary by severity. It has been widely stated that signs of maldigestion typically do not present until 90% of the functional reserve is lost. However, this is a wasting disease, so I would suspect that some signs would be present before 90% is lost. Your companion pet may exhibit the following signs:

- Voracious appetite
- Vomiting (generally concurrent with IBD, inflammatory bowel disease, or a food sensitivity)
- Ravenous, insatiable hunger
- Eliminating voluminous yellowish or grayish soft “cow patty” stools – this a “hallmark” sign
- Possibly aggressive behavior
- Anorexia or extreme thinness
- Diarrhea
- Gas formation

## Types of EPI

We are continuously discovering more about this disease. So, I would not be surprised if more types or causes of EPI crop up over the next few years.

•**Pancreatic Acinar Atrophy (PAA)** is the most common cause of EPI in dogs. We will likely see more causes and cases of PAA over the next few years. PAA is thought to be an immune-mediated condition secondary to lymphocytic pancreatitis; German Shepherd Dogs and Rough Coated Collies have a genetic predisposition to EPI. Of course, these two breeds may be overrepresented in clinical trials.

•**Chronic Pancreatitis** can develop into EPI. ***My concern is that this is the sleeper condition.*** Pet caregivers figure out methods to manage chronic pancreatitis but do not realize when it has triggered EPI. This form of EPI is more common in cats than dogs. In fact, it is believed that cats also have EPI more often than it is diagnosed. Diabetes mellitus can be present

•**Congenital Hypoplasia** is an underdeveloped or incomplete development of the pancreas organ or its tissue.

•**Neoplasia** causes an obstruction not allowing the digestive enzymes to flow from the pancreas to the duodenum. Technically, neoplasia is not EPI, but similar symptoms can ensue.

## Diagnosis



When presented with a skinny or SID dog or cat, I often think that veterinarians may search for cancer or other conditions as a possible cause and therefore order expensive and possibly invasive tests. Personally, I would suggest the [NutriScan Food Sensitivity Test](#), Serum Pancreatic Lipase Immunoreactivity (PLI) for pancreatitis, and the preferred EPI diagnostic blood test called Trypsin-Like Immunoreactivity (TLI). TLI measures the amount of the digestive enzymes, trypsin and trypsinogen, in the blood. If the blood is deficient in these enzymes, it means the pet has EPI. By the way, testing for TLI is best measured by the Texas A&M University diagnostic lab.

### **Treatment**

Currently, no cure for EPI is available. So, what we need to do is replace the deficient digestive enzymes and have them go directly into the duodenum via the stomach. We source the pancreas of another animal and make it into a powdered form that can be mixed with moist food. The preferred source is from porcine (pork) because their pancreas is the closest genetically to that of dogs and humans.

Now, NutriScan comes into play because if your pet has a food sensitivity to pork, you are really not getting ahead of EPI since the small intestine is battling the offending food. In this case, you can opt for pancreatic enzymes from bovine (cow), sheep or lamb if your pet did not show sensitivities to these proteins. If NutriScan showed your pet to have true classical leaky gut concurrent with EPI or IBD, you may try plant enzymes but these are not preferred.

Another option is to feed fresh raw pancreas but I would steer clear of pork pancreas and go for a beef source. However, you may need to vary the volume fed as the amount of digestive enzymes present can be different between these animal species.

Nutrition can be tricky with EPI dogs. We do know that you need to feed small frequent meals and start out with a low fiber food. [Fiber interferes with the function of pancreatic replacement enzymes needed to manage EPI.] However, fiber is essential for digestive health and can be increased based on your dog's reaction. Nutrition is a very lengthy and detailed component of the EPI condition. So, I would visit the [EPI4Dogs](#) website, which has two pages of food options. Of course, I do not want you self-diagnosing your dog with EPI and applying these tips. You need to have confirmation from your veterinarian with the TLI blood test.

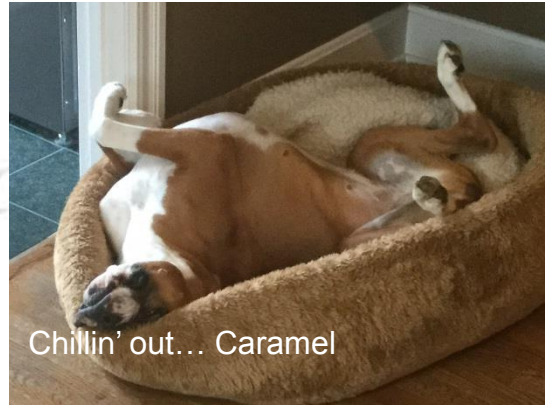
Dogs and cats with an EPI diagnosis will more than likely need vitamin B12 supplementation too. Additionally, the dog or cat will probably have SID, which is how veterinarians usually start narrowing in on the diagnosis of EPI. So, we would need to give antibiotics to clear up this infection. Often, SID recurs so companion pets are on and off antibiotics frequently.



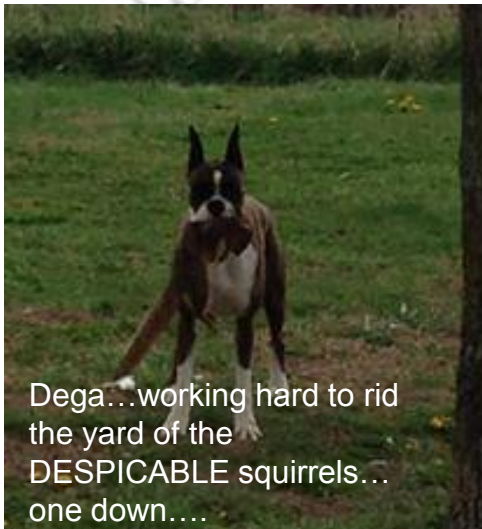
## Fun Stuff!



Miley... such a pretty girl...



Chillin' out... Caramel



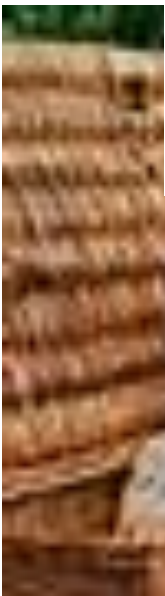
Dega...working hard to rid the yard of the DESPICABLE squirrels... one down....



Happy Birthday to YOU!!  
Happy Birthday dear Candy!... Kids having ice cream

**2016 Annual Meeting**  
**Mark your Calendar!**  
**June 25 @11am**

**Shelter 4 at Shawnee Mission Park**  
Annual meeting... potluck lunch...  
beautiful park setting!



Picnic in the Park

